

A photograph of a car body in a factory setting. A worker in a white protective suit is crouched next to the car, working on the interior. The car is silver and has a sleek, aerodynamic design. The background shows industrial equipment and a factory floor.

**DESIGN
& ESD**

BEST IN CLASS



ARELAX™
SHOE CONSTRUCTION

ARZO 805 619090 S1 P ESD

upper	hydrophobic microfiber NUBUCK PRO 2.2 mm increases resistance and breathability
lining	CLIMAX with 3D construction for unlimited air circulation and climate optimisation
insole	EFFECTOR memory polyurethane foam for added air rebound and breathability
toe cap	composite, extra wide anatomical shape provides more toe room and optimum fit
midsole	ERGOFLEX metal-free, outstanding flexibility for natural movement
sole	RAPID PU.2D with exceptional lightness for energy saving
size	35 - 48
standard	EN ISO 20345:2011 S1 P SRC, ESD in accordance with EN IEC 61340-4-3:2018

safety sandals **METAL FREE**

ARZO 805 619090 S1 P ESD

ARZO 805 619090 S1 ESD

ARELAX™
SHOE CONSTRUCTION
ART OF RELAXED FEET

**AIR FRESHENER
FOR FEET.**

ARTRA SAFETY



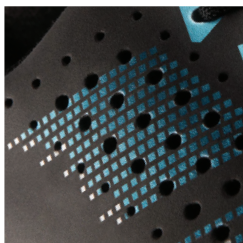
ARELAX™
SHOE CONSTRUCTION

ARIOR 835 Air 619090 S1 P ESD

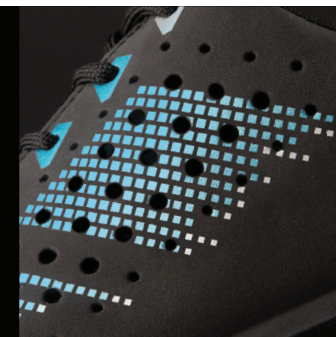
upper	hydrophobic microfiber NUBUCK PRO 2.2 mm increases resistance and breathability
lining	CLIMAX with 3D construction for unlimited air circulation and climate optimisation
insole	EFFECTOR memory polyurethane foam for added air rebound and breathability
toe cap	composite, extra wide anatomical shape provides more toe room and optimum fit
midsole	ERGOFLEX metal-free, outstanding flexibility for natural movement
sole	RAPID PU.2D with exceptional lightness for energy saving
size	35 - 48
standard	EN ISO 20345:2011 S1 P SRC, ESD in accordance with EN IEC 61340-4-3:2018

safety half shoes **METAL FREE**

ARIOR 835 Air 619090 S1 P ESD



ARELAX™
SHOE CONSTRUCTION
ART OF RELAXED FEET



**NOW LIGHTER
THAN EVER BEFORE.**

ARTRA SAFETY





ARELAX™
SHOE CONSTRUCTION

ARIOR 835 619090 S3 ESD

upper	hydrophobic microfiber NUBUCK PRO 2.2 mm increases resistance and breathability
lining	CLIMAX with 3D construction for unlimited air circulation and climate optimisation
insole	EFFECTOR memory polyurethane foam for added air rebound and breathability
toe cap	composite, extra wide anatomical shape provides more toe room and optimum fit
midsole	ERGOFLEX metal-free, outstanding flexibility for natural movement
sole	RAPID PU.2D with exceptional lightness for energy saving
size	35 – 48
standard	EN ISO 20345:2011 S3 SRC, ESD in accordance with EN IEC 61340-4-3:2018

safety half shoes **METAL FREE**

ARIOR 835 619090 S3 ESD



ARELAX™
SHOE CONSTRUCTION

ART OF RELAXED FEET

**UNCOMPROMISING
NUMBER 1.**

ARTRAX SAFETY



ARELAX™
SHOE CONSTRUCTION

ARION 836 Air 619090 S1 P ESD

upper	hydrophobic microfiber NUBUCK PRO 2.2 mm increases resistance and breathability
lining	CLIMAX with 3D construction for unlimited air circulation and climate optimisation
insole	EFFECTOR memory polyurethane foam for added air rebound and breathability
toe cap	composite, extra wide anatomical shape provides more toe room and optimum fit
midsole	ERGOFLEX metal-free, outstanding flexibility for natural movement
sole	RAPID PU.2D with exceptional lightness for energy saving
size	35 - 48
standard	EN ISO 20345:2011 S1 P SRC, ESD in accordance with EN IEC 61340-4-3:2018

safety half shoes **METAL FREE**

ARION 836 Air 619090 S1 P ESD



ARELAX™
SHOE CONSTRUCTION
ART OF RELAXED FEET



**THE LIGHTEST
IN HISTORY.**



ARTRA SAFETY





ARELAX™
SHOE CONSTRUCTION

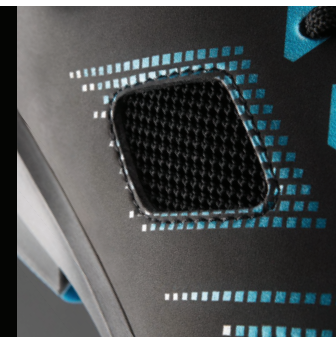
ARIEL 837 Air 619090 S1 P ESD

upper	hydrophobic microfiber NUBUCK PRO 2.2 mm increases resistance and breathability / AIRKNIT PRO
lining	CLIMAX with 3D construction for unlimited air circulation and climate optimisation
insole	EFFECTOR memory polyurethane foam for added air rebound and breathability
toe cap	composite, extra wide anatomical shape provides more toe room and optimum fit
midsole	ERGOFLEX metal-free, outstanding flexibility for natural movement
sole	RAPID PU.2D with exceptional lightness for energy saving
size	35 - 48
standard	EN ISO 20345:2011 S1 P SRC, ESD in accordance with EN IEC 61340-4-3:2018

safety half shoes **METAL FREE**

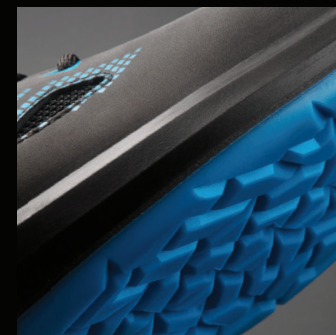
ARIEL 837 Air 619090 S1 P ESD

ARELAX™
SHOE CONSTRUCTION
ART OF RELAXED FEET



**REDEFINING
OF FIT.**

ARTRA SAFETY





ARELAX™
SHOE CONSTRUCTION

ARRIVAL 855 619090 S3 ESD

upper	hydrophobic microfiber NUBUCK PRO 2.2 mm increases resistance and breathability
lining	CLIMAX with 3D construction for unlimited air circulation and climate optimisation
insole	EFFECTOR memory polyurethane foam for added air rebound and breathability
toe cap	composite, extra wide anatomical shape provides more toe room and optimum fit
midsole	ERGOFLEX metal-free, outstanding flexibility for natural movement
sole	RAPID PU.2D with exceptional lightness for energy saving
size	35 - 48
standard	EN ISO 20345:2011 S3 SRC, ESD in accordance with EN IEC 61340-4-3:2018

safety boots **METAL FREE**

ARRIVAL 855 619090 S3 ESD



ARELAX™
SHOE CONSTRUCTION
ART OF RELAXED FEET

**BASKETBALL
DNA.**

ARTRA SAFETY



ARELAX™
SHOE CONSTRUCTION

ARZO 805 678080 S1 P ESD

upper	hydrophobic microfiber INDUSTRY PRO 2,2 mm increases resistance and breathability
lining	CLIMAX with 3D construction for unlimited air circulation and climate optimisation
insole	EFFECTOR memory polyurethane foam for added air rebound and breathability
toe cap	composite, extra wide anatomical shape provides more toe room and optimum fit
midsole	ERGOFLEX metal-free, outstanding flexibility for natural movement
sole	RAPID PU.2D with exceptional lightness for energy saving
size	35 - 48
standard	EN ISO 20345:2011 S1 P SRC, ESD in accordance with EN IEC 61340-4-3:2018

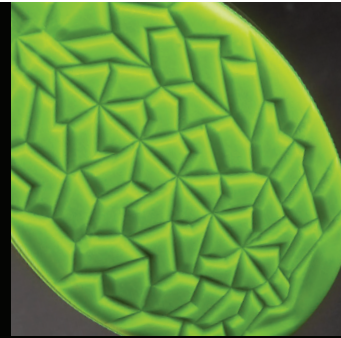
safety sandals **METAL FREE**

ARZO 805 678080 S1 P ESD

ARZO 805 678080 S1 ESD

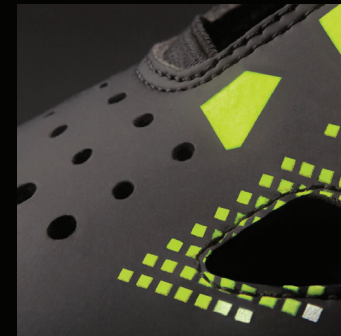
ARELAX™
SHOE CONSTRUCTION

ART OF RELAXED FEET



**AIR FRESHENER
FOR FEET.**

ARTRA SAFETY





ARELAX™
SHOE CONSTRUCTION

ARIOR 835 Air 678080 S1 P ESD

upper	hydrophobic microfiber INDUSTRY PRO 2,2 mm increases resistance and breathability
lining	CLIMAX with 3D construction for unlimited air circulation and climate optimisation
insole	EFFECTOR memory polyurethane foam for added air rebound and breathability
toe cap	composite, extra wide anatomical shape provides more toe room and optimum fit
midsole	ERGOFLEX metal-free, outstanding flexibility for natural movement
sole	RAPID PU.2D with exceptional lightness for energy saving
size	35 - 48
standard	EN ISO 20345:2011 S1 P SRC, ESD in accordance with EN IEC 61340-4-3:2018

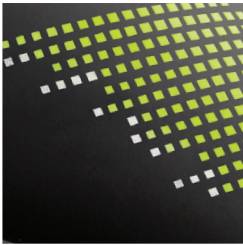
safety half shoes **METAL FREE**

ARIOR 835 Air 678080 S1 P ESD

ARELAX™
SHOE CONSTRUCTION
ART OF RELAXED FEET

**NOW LIGHTER
THAN EVER BEFORE.**

ARTRA SAFETY



ARELAX™
SHOE CONSTRUCTION

ARIOR 835 678080 S3 ESD

upper	hydrophobic microfiber INDUSTRY PRO 2,2 mm increases resistance and breathability
lining	CLIMAX with 3D construction for unlimited air circulation and climate optimisation
insole	EFFECTOR memory polyurethane foam for added air rebound and breathability
toe cap	composite, extra wide anatomical shape provides more toe room and optimum fit
midsole	ERGOFLEX metal-free, outstanding flexibility for natural movement
sole	RAPID PU.2D with exceptional lightness for energy saving
size	35 - 48
standard	EN ISO 20345:2011 S3 SRC, ESD in accordance with EN IEC 61340-4-3:2018

safety half shoes **METAL FREE**

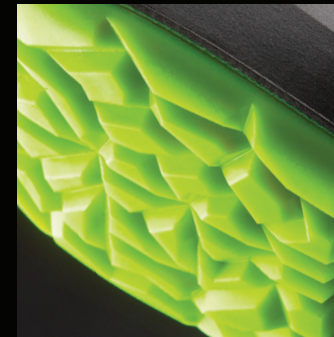
ARIOR 835 678080 S3 ESD



ARELAX™

SHOE CONSTRUCTION

ART OF RELAXED FEET



**UNCOMPROMISING
NUMBER 1.**

ARTRA SAFETY



ARELAX™
SHOE CONSTRUCTION

ARION 836 Air 678080 S1 P ESD

upper	hydrophobic microfiber INDUSTRY PRO 2,2 mm increases resistance and breathability
lining	CLIMAX with 3D construction for unlimited air circulation and climate optimisation
insole	EFFECTOR memory polyurethane foam for added air rebound and breathability
toe cap	composite, extra wide anatomical shape provides more toe room and optimum fit
midsole	ERGOFLEX metal-free, outstanding flexibility for natural movement
sole	RAPID PU.2D with exceptional lightness for energy saving
size	35 - 48
standard	EN ISO 20345:2011 S1 P SRC, ESD in accordance with EN IEC 61340-4-3:2018

safety half shoes **METAL FREE**

ARION 836 Air 678080 S1 P ESD

ARELAX™
SHOE CONSTRUCTION
ART OF RELAXED FEET

**THE LIGHTEST
IN HISTORY.**

ARTRA SAFETY



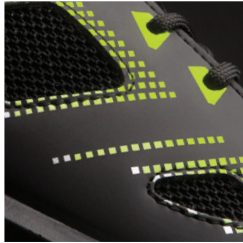
ARELAX™
SHOE CONSTRUCTION

ARIEL 837 Air 678080 S1 P ESD

upper	hydrophobic microfiber NUBUCK PRO 2.2 mm increases resistance and breathability / AIRKNIT PRO
lining	CLIMAX with 3D construction for unlimited air circulation and climate optimisation
insole	EFFECTOR memory polyurethane foam for added air rebound and breathability
toe cap	composite, extra wide anatomical shape provides more toe room and optimum fit
midsole	ERGOFLEX metal-free, outstanding flexibility for natural movement
sole	RAPID PU.2D with exceptional lightness for energy saving
size	35 - 48
standard	EN ISO 20345:2011 S1 P SRC, ESD in accordance with EN IEC 61340-4-3:2018

safety half shoes **METAL FREE**

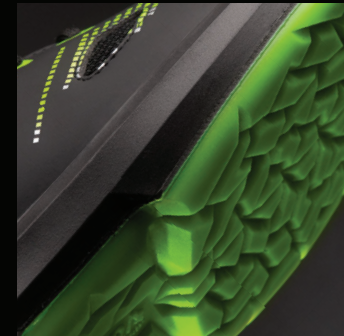
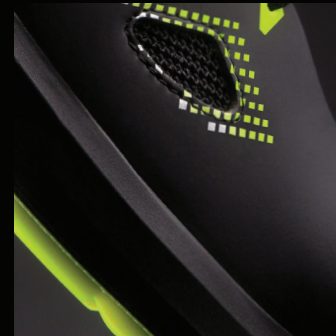
ARIEL 837 Air 678080 S1 P ESD



ARELAX™

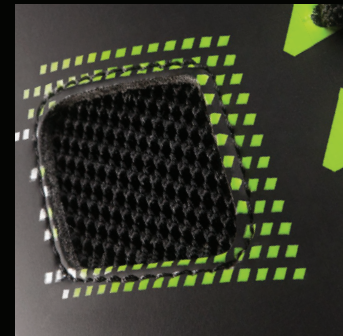
SHOE CONSTRUCTION

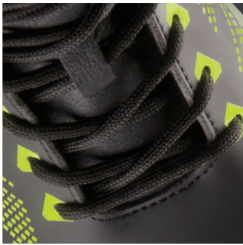
ART OF RELAXED FEET



**REDEFINING
OF FIT.**

ARTRA SAFETY





ARELAX™
SHOE CONSTRUCTION

ARRIVAL 855 678080 S3 ESD

upper	hydrophobic microfiber INDUSTRY PRO 2,2 mm increases resistance and breathability
lining	CLIMAX with 3D construction for unlimited air circulation and climate optimisation
insole	EFFECTOR memory polyurethane foam for added air rebound and breathability
toe cap	composite, extra wide anatomical shape provides more toe room and optimum fit
midsole	ERGOFLEX metal-free, outstanding flexibility for natural movement
sole	RAPID PU.2D with exceptional lightness for energy saving
size	35 - 48
standard	EN ISO 20345:2011 S3 SRC, ESD in accordance with EN IEC 61340-4-3:2018

safety boots **METAL FREE**

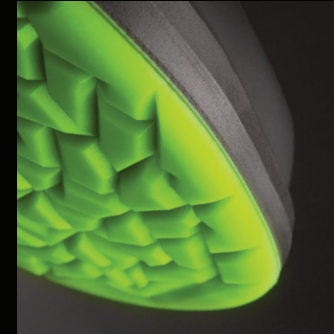
ARRIVAL 855 678080 S3 ESD



ARELAX™
SHOE CONSTRUCTION
ART OF RELAXED FEET

BASKETBALL DNA.

ARTRA SAFETY





ARELAX™
SHOE CONSTRUCTION

ARZO 805 676560 S1 P ESD

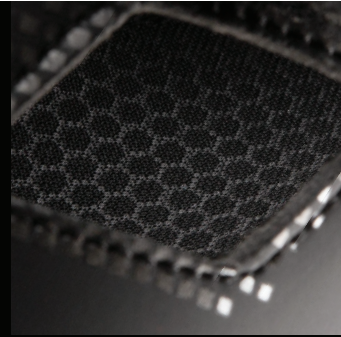
upper	hydrophobic microfiber INDUSTRY PRO 2,2 mm increases resistance and breathability
lining	CLIMAX with 3D construction for unlimited air circulation and climate optimisation
insole	EFFECTOR memory polyurethane foam for added air rebound and breathability
toe cap	composite, extra wide anatomical shape provides more toe room and optimum fit
midsole	ERGOFLEX metal-free, outstanding flexibility for natural movement
sole	RAPID PU.2D with exceptional lightness for energy saving
size	35 - 48
standard	EN ISO 20345:2011 S1 P SRC, ESD in accordance with EN IEC 61340-4-3:2018

safety sandals **METAL FREE**

ARZO 805 676560 S1 P ESD

ARZO 805 676560 S1 ESD

ARELAX™
SHOE CONSTRUCTION
ART OF RELAXED FEET



**AIR FRESHENER
FOR FEET.**

ARTRA SAFETY





ARELAX™
SHOE CONSTRUCTION

ARIOR 835 Air 676560 S1 P ESD

upper	hydrophobic microfiber INDUSTRY PRO 2,2 mm increases resistance and breathability
lining	CLIMAX with 3D construction for unlimited air circulation and climate optimisation
insole	EFFECTOR memory polyurethane foam for added air rebound and breathability
toe cap	composite, extra wide anatomical shape provides more toe room and optimum fit
midsole	ERGOFLEX metal-free, outstanding flexibility for natural movement
sole	RAPID PU.2D with exceptional lightness for energy saving
size	35 - 48
standard	EN ISO 20345:2011 S1 P SRC, ESD in accordance with EN IEC 61340-4-3:2018

safety half shoes **METAL FREE**

ARIOR 835 Air 676560 S1 P ESD

ARELAX™
SHOE CONSTRUCTION
ART OF RELAXED FEET



**NOW LIGHTER
THAN EVER BEFORE.**

ARTRA SAFETY



ARELAX™
SHOE CONSTRUCTION

ARIOR 835 676560 S3 ESD

upper	hydrophobic microfiber INDUSTRY PRO 2,2 mm increases resistance and breathability
lining	CLIMAX with 3D construction for unlimited air circulation and climate optimisation
insole	EFFECTOR memory polyurethane foam for added air rebound and breathability
toe cap	composite, extra wide anatomical shape provides more toe room and optimum fit
midsole	ERGOFLEX metal-free, outstanding flexibility for natural movement
sole	RAPID PU.2D with exceptional lightness for energy saving
size	35 - 48
standard	EN ISO 20345:2011 S3 SRC, ESD in accordance with EN IEC 61340-4-3:2018

safety half shoes **METAL FREE**

ARIOR 835 676560 S3 ESD



ARELAX™
SHOE CONSTRUCTION

ART OF RELAXED FEET

**UNCOMPROMISING
NUMBER 1.**

ARTRA SAFETY



ARELAX™
SHOE CONSTRUCTION

ARIEL 837 Air 676560 S1 P ESD

upper	hydrophobic microfiber NUBUCK PRO 2.2 mm increases resistance and breathability / AIRKNIT PRO
lining	CLIMAX with 3D construction for unlimited air circulation and climate optimisation
insole	EFFECTOR memory polyurethane foam for added air rebound and breathability
toe cap	composite, extra wide anatomical shape provides more toe room and optimum fit
midsole	ERGOFLEX metal-free, outstanding flexibility for natural movement
sole	RAPID PU.2D with exceptional lightness for energy saving
size	35 - 48
standard	EN ISO 20345:2011 S1 P SRC, ESD in accordance with EN IEC 61340-4-3:2018

safety half shoes **METAL FREE**

ARIEL 837 Air 676560 S1 P ESD



ARELAX™
SHOE CONSTRUCTION

ART OF RELAXED FEET



**REDEFINING
OF FIT.**



ARTRA SAFETY



ARELAX™
SHOE CONSTRUCTION

ARRIVAL 855 676560 S3 ESD

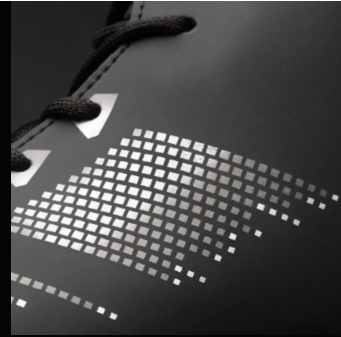
upper	hydrophobic microfiber INDUSTRY PRO 2,2 mm increases resistance and breathability
lining	CLIMAX with 3D construction for unlimited air circulation and climate optimisation
insole	EFFECTOR memory polyurethane foam for added air rebound and breathability
toe cap	composite, extra wide anatomical shape provides more toe room and optimum fit
midsole	ERGOFLEX metal-free, outstanding flexibility for natural movement
sole	RAPID PU.2D with exceptional lightness for energy saving
size	35 – 48
standard	EN ISO 20345:2011 S3 SRC, ESD in accordance with EN IEC 61340-4-3:2018

safety boots **METAL FREE**

ARRIVAL 855 676560 S3 ESD

ARRIVAL 855 676560 S3 CI ESD

ARELAX™
SHOE CONSTRUCTION
ART OF RELAXED FEET



**BASKETBALL
DNA.**

ARTRA SAFETY





ARELAX™
SHOE CONSTRUCTION

ARMEN 9008 6760 S1 P ESD

upper	hydrophobic microfiber INDUSTRY PRO 2,2 mm increases resistance and breathability
lining	TOTAL DRY for exceptional level of absorption and breathability
insole	EFFECTOR memory polyurethane foam for added air rebound and breathability
toe cap	composite, extra wide anatomical shape provides more toe room and optimum fit
midsole	ERGOFLEX metal-free, outstanding flexibility for natural movement
sole	RAPID PU.2D with exceptional lightness for energy saving
size	35 - 48
standard	EN ISO 20345:2011 S1 P SRC, ESD in accordance with EN IEC 61340-4-3:2018

safety sandals **METAL FREE**

ARMEN 9008 6760 S1 P ESD

ARMEN 9008 6760 S1 ESD

ARTRA SAFETY



ARELAX™
SHOE CONSTRUCTION

ARMEN 9008 1010 S1 P ESD

upper	hydrophobic microfiber MICRO PRO 2,2 mm increases resistance and breathability
lining	TOTAL DRY for exceptional level of absorption and breathability
insole	EFFECTOR memory polyurethane foam for added air rebound and breathability
toe cap	composite, extra wide anatomical shape provides more toe room and optimum fit
midsole	ERGOFLEX metal-free, outstanding flexibility for natural movement
sole	RAPID PU.2D with exceptional lightness for energy saving
size	35 - 48
standard	EN ISO 20345:2011 S1 P SRC, ESD in accordance with EN IEC 61340-4-3:2018

safety sandals **METAL FREE**

ARMEN 9008 1010 S1 P ESD



ARELAX™
SHOE CONSTRUCTION

AREZZO 830 Air 1010 S1 P ESD

upper	hydrophobic microfiber MICRO PRO 2,2 mm increases resistance and breathability
lining	CLIMAX with 3D construction for unlimited air circulation and climate optimisation
insole	EFFECTOR memory polyurethane foam for added air rebound and breathability
toe cap	composite, extra wide anatomical shape provides more toe room and optimum fit
midsole	ERGOFLEX metal-free, outstanding flexibility for natural movement
sole	RAPID PU.2D with exceptional lightness for energy saving
size	35 - 48
standard	EN ISO 20345:2011 S1 P SRC, ESD in accordance with EN IEC 61340-4-3:2018

safety half shoes **METAL FREE**

AREZZO 830 Air 1010 S1 P ESD

ARTRA SAFETY



ARELAX™
SHOE CONSTRUCTION

AREZZO 830 1010 S3 ESD

upper	hydrophobic microfiber MICRO PRO 2,2 mm increases resistance and breathability
lining	CLIMAX with 3D construction for unlimited air circulation and climate optimisation
insole	EFFECTOR memory polyurethane foam for added air rebound and breathability
toe cap	composite, extra wide anatomical shape provides more toe room and optimum fit
midsole	ERGOFLEX metal-free, outstanding flexibility for natural movement
sole	RAPID PU.2D with exceptional lightness for energy saving
size	35 - 48
standard	EN ISO 20345:2011 S3 SRC, ESD in accordance with EN IEC 61340-4-3:2018

safety half shoes **METAL FREE**

AREZZO 830 1010 S3 ESD



ARELAX™
SHOE CONSTRUCTION

ARSO 701 618080 S1 P ESD

upper	hydrophobic microfiber NUBUCK PRO 2.2 mm increases resistance and breathability
lining	CLIMAX with 3D construction for unlimited air circulation and climate optimisation
insole	ENERGIZER anatomical, memory polyurethane foam for added air rebound and breathability
toe cap	steel, wide anatomical shape provides more toe room and optimum fit
midsole	ERGOFLEX metal-free, outstanding flexibility for natural movement
sole	RAPTOR PU.2D with responsive cushioning for high energy return
size	35 - 48
standard	EN ISO 20345:2011 S1 P SRC, ESD in accordance with EN IEC 61340-4-3:2018

safety sandals

ARSO 701 618080 S1 P ESD

ARSO 701 618080 S1 ESD

ARELAX™
SHOE CONSTRUCTION
ART OF RELAXED FEET



**FRESH AIR
IS LUXURY.**

ARTRA SAFETY





ARELAX™
SHOE CONSTRUCTION

ARDESIO 731 618080 S1 P ESD

upper	hydrophobic microfiber NUBUCK PRO 2.2 mm increases resistance and breathability
lining	CLIMAX with 3D construction for unlimited air circulation and climate optimisation
insole	ENERGIZER anatomical, memory polyurethane foam for added air rebound and breathability
toe cap	steel, wide anatomical shape provides more toe room and optimum fit
midsole	ERGOFLEX metal-free, outstanding flexibility for natural movement
sole	RAPTOR PU.2D with responsive cushioning for high energy return
size	35 - 48
standard	EN ISO 20345:2011 S1 P SRC, ESD in accordance with EN IEC 61340-4-3:2018

safety half shoes

ARDESIO 731 618080 S1 P ESD

ARDESIO 731 618080 S1 ESD



ARELAX™
SHOE CONSTRUCTION
ART OF RELAXED FEET



**DESIGN BURSTING
WITH ENERGY.**

ARTRA SAFETY





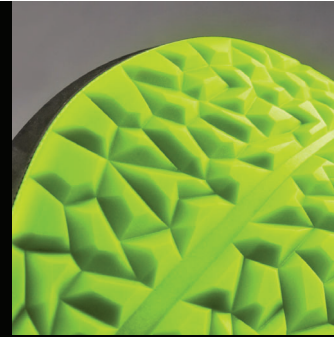
ARELAX™
SHOE CONSTRUCTION

ARCASIO 732 618080 S1 P ESD

upper	hydrophobic microfiber NUBUCK PRO 2.2 mm increases resistance and breathability / AIRKNIT PRO
lining	CLIMAX with 3D construction for unlimited air circulation and climate optimisation
insole	ENERGIZER anatomical, memory polyurethane foam for added air rebound and breathability
toe cap	steel, wide anatomical shape provides more toe room and optimum fit
midsole	ERGOFLEX metal-free, outstanding flexibility for natural movement
sole	RAPTOR PU.2D with responsive cushioning for high energy return
size	35 - 48
standard	EN ISO 20345:2011 S1 P SRC, ESD in accordance with EN IEC 61340-4-3:2018

safety half shoes

ARCASIO 732 618080 S1 P ESD



ARELAX™
SHOE CONSTRUCTION

ART OF RELAXED FEET



**ENERGY CHARGING
AT EVERY STEP.**

ARTRA SAFETY



ARELAX™
SHOE CONSTRUCTION

AROSIO 730 Air 618080 S1 P ESD

upper	hydrophobic microfiber NUBUCK PRO 2.2 mm increases resistance and breathability
lining	CLIMAX with 3D construction for unlimited air circulation and climate optimisation
insole	ENERGIZER anatomical, memory polyurethane foam for added air rebound and breathability
toe cap	steel, wide anatomical shape provides more toe room and optimum fit
midsole	ERGOFLEX metal-free, outstanding flexibility for natural movement
sole	RAPTOR PU.2D with responsive cushioning for high energy return
size	35 - 48
standard	EN ISO 20345:2011 S1 P SRC, ESD in accordance with EN IEC 61340-4-3:2018

safety half shoes

AROSIO 730 Air 618080 S1 P ESD

ARELAX™
SHOE CONSTRUCTION

ART OF RELAXED FEET



**LARGE DOSE
OF ENERGY.**

ARTRA SAFETY





ARELAX™
SHOE CONSTRUCTION

AROSIO 730 618080 S3 ESD

upper	hydrophobic microfiber NUBUCK PRO 2.2 mm increases resistance and breathability
lining	CLIMAX with 3D construction for unlimited air circulation and climate optimisation
insole	ENERGIZER anatomical, memory polyurethane foam for added air rebound and breathability
toe cap	steel, wide anatomical shape provides more toe room and optimum fit
midsole	ERGOFLEX metal-free, outstanding flexibility for natural movement
sole	RAPTOR PU.2D with responsive cushioning for high energy return
size	35 - 48
standard	EN ISO 20345:2011 S3 SRC, ESD in accordance with EN IEC 61340-4-3:2018

safety half shoes

AROSIO 730 618080 S3 ESD

ARELAX™

SHOE CONSTRUCTION

ART OF RELAXED FEET



POLE POSITION.

ARTRA SAFETY





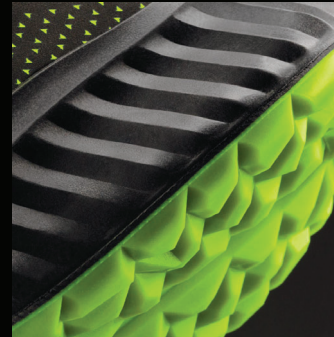
ARELAX™
SHOE CONSTRUCTION

AROSERIO 750 618080 S3 ESD

upper	hydrophobic microfiber NUBUCK PRO 2.2 mm increases resistance and breathability
lining	CLIMAX with 3D construction for unlimited air circulation and climate optimisation
insole	ENERGIZER anatomical, memory polyurethane foam for added air rebound and breathability
toe cap	steel, wide anatomical shape provides more toe room and optimum fit
midsole	ERGOFLEX metal-free, outstanding flexibility for natural movement
sole	RAPTOR PU.2D with responsive cushioning for high energy return
size	35 - 48
standard	EN ISO 20345:2011 S3 SRC, ESD in accordance with EN IEC 61340-4-3:2018

safety boots

AROSERIO 750 618080 S3 ESD



ARELAX™
SHOE CONSTRUCTION

ART OF RELAXED FEET

**EVERY STEP IS
A CHANCE TO FLY.**

ARTRA SAFETY





ARELAX™
SHOE CONSTRUCTION

ARSO 701 616560 S1 P ESD

upper	hydrophobic microfiber NUBUCK PRO 2.2 mm increases resistance and breathability
lining	CLIMAX with 3D construction for unlimited air circulation and climate optimisation
insole	ENERGIZER anatomical, memory polyurethane foam for added air rebound and breathability
toe cap	steel, wide anatomical shape provides more toe room and optimum fit
midsole	ERGOFLEX metal-free, outstanding flexibility for natural movement
sole	RAPTOR PU.2D with responsive cushioning for high energy return
size	35 – 48
standard	EN ISO 20345:2011 S1 P SRC, ESD in accordance with EN IEC 61340-4-3:2018

safety sandals

ARSO 701 616560 S1 P ESD

ARSO 701 616560 S1 ESD



ARELAX™
SHOE CONSTRUCTION
ART OF RELAXED FEET



**FRESH AIR
IS LUXURY.**



ARTRA SAFETY





ARELAX™
SHOE CONSTRUCTION

ARDESIO 731 616560 S1 ESD

upper	hydrophobic microfiber NUBUCK PRO 2.2 mm increases resistance and breathability
lining	CLIMAX with 3D construction for unlimited air circulation and climate optimisation
insole	ENERGIZER anatomical, memory polyurethane foam for added air rebound and breathability
toe cap	steel, wide anatomical shape provides more toe room and optimum fit
sole	RAPTOR PU.2D with responsive cushioning for high energy return
size	35 - 48
standard	EN ISO 20345:2011 S1 SRC, ESD in accordance with EN IEC 61340-4-3:2018

safety half shoes

ARDESIO 731 616560 S1 ESD

work half shoes **METAL FREE**

ARDESIO 731 616560 O1 FO ESD

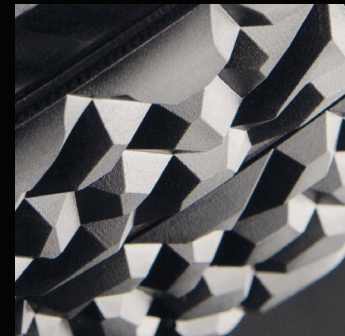
ARELAX™
SHOE CONSTRUCTION

ART OF RELAXED FEET



**DESIGN BURSTING
WITH ENERGY.**

ARTRA SAFETY





ARELAX™
SHOE CONSTRUCTION

ARCASIO 732 616560 S1 P ESD





upper	hydrophobic microfiber NUBUCK PRO 2.2 mm increases resistance and breathability / AIRKNIT PRO
lining	CLIMAX with 3D construction for unlimited air circulation and climate optimisation
insole	ENERGIZER anatomical, memory polyurethane foam for added air rebound and breathability
toe cap	steel, wide anatomical shape provides more toe room and optimum fit
midsole	ERGOFLEX metal-free, outstanding flexibility for natural movement
sole	RAPTOR PU.2D with responsive cushioning for high energy return
size	35 - 48
standard	EN ISO 20345:2011 S1 P SRC, ESD in accordance with EN IEC 61340-4-3:2018

safety half shoes

ARCASIO 732 616560 S1 P ESD

work half shoes **METAL FREE**

ARCASIO 732 616560 O1 FO ESD

ARELAX™

SHOE CONSTRUCTION

ART OF RELAXED FEET

ENERGY CHARGING AT EVERY STEP.

ARTRA SAFETY



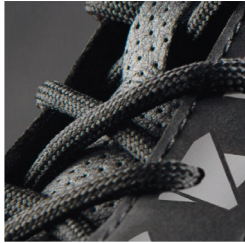
ARELAX™
SHOE CONSTRUCTION

AROSIO 730 Air 616560 S1 P ESD

upper	hydrophobic microfiber NUBUCK PRO 2.2 mm increases resistance and breathability
lining	CLIMAX with 3D construction for unlimited air circulation and climate optimisation
insole	ENERGIZER anatomical, memory polyurethane foam for added air rebound and breathability
toe cap	steel, wide anatomical shape provides more toe room and optimum fit
midsole	ERGOFLEX metal-free, outstanding flexibility for natural movement
sole	RAPTOR PU.2D with responsive cushioning for high energy return
size	35 - 48
standard	EN ISO 20345:2011 S1 P SRC, ESD in accordance with EN IEC 61340-4-3:2018

safety half shoes

AROSIO 730 Air 616560 S1 P ESD



ARELAX™

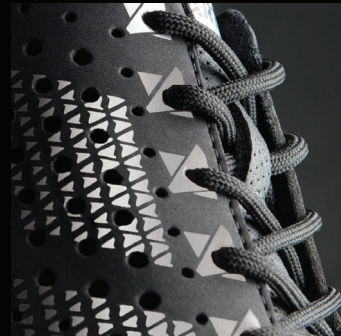
SHOE CONSTRUCTION

ART OF RELAXED FEET



**LARGE DOSE
OF ENERGY.**

ARTRA SAFETY





ARELAX™
SHOE CONSTRUCTION

AROSIO 730 616560 S3 ESD

upper	hydrophobic microfiber NUBUCK PRO 2.2 mm increases resistance and breathability
lining	CLIMAX with 3D construction for unlimited air circulation and climate optimisation
insole	ENERGIZER anatomical, memory polyurethane foam for added air rebound and breathability
toe cap	steel, wide anatomical shape provides more toe room and optimum fit
midsole	ERGOFLEX metal-free, outstanding flexibility for natural movement
sole	RAPTOR PU.2D with responsive cushioning for high energy return
size	35 - 48
standard	EN ISO 20345:2011 S3 SRC, ESD in accordance with EN IEC 61340-4-3:2018

safety half shoes

AROSIO 730 616560 S3 ESD

work half shoes **METAL FREE**

AROSIO 730 616560 O2 FO ESD

ARELAX™
SHOE CONSTRUCTION

ART OF RELAXED FEET



POLE POSITION.

ARTRA SAFETY





ARELAX™
SHOE CONSTRUCTION

AROSERIO 750 616560 S3 ESD

upper	hydrophobic microfiber NUBUCK PRO 2.2 mm increases resistance and breathability
lining	CLIMAX with 3D construction for unlimited air circulation and climate optimisation
insole	ENERGIZER anatomical, memory polyurethane foam for added air rebound and breathability
toe cap	steel, wide anatomical shape provides more toe room and optimum fit
midsole	ERGOFLEX metal-free, outstanding flexibility for natural movement
sole	RAPTOR PU.2D with responsive cushioning for high energy return
size	35 - 48
standard	EN ISO 20345:2011 S3 SRC, ESD in accordance with EN IEC 61340-4-3:2018

safety boots

AROSERIO 750 616560 S3 ESD

work boots **METAL FREE**

AROSERIO 750 616560 O2 FO ESD





ARELAX™
SHOE CONSTRUCTION

ART 702 Air 6660 SB A E FO ESD

upper	hydrophobic microfiber MICRO PRO 2,2 mm increases resistance and breathability
lining	CLIMAX with 3D construction for unlimited air circulation and climate optimisation
insole	EFFECTOR memory polyurethane foam for added air rebound and breathability
toe cap	steel, wide anatomical shape provides more toe room and optimum fit
sole	RAPTOR PU.2D with responsive cushioning for high energy return
size	35 - 48
standard	EN ISO 20345:2011 SB A E FO SRC, ESD in accordance with EN IEC 61340-4-3:2018

safety sandals

ART 702 Air 6660 SB A E FO ESD

work sandals

ART 702 Air 6660 OB A E FO ESD

ARTRA SAFETY



ARELAX™
SHOE CONSTRUCTION

ARMEN 9007 6660 S1 ESD

upper	hydrophobic microfiber MICRO PRO 2,2 mm increases resistance and breathability
lining	TOTAL DRY for exceptional level of absorption and breathability
insole	EFFECTOR memory polyurethane foam for added air rebound and breathability
toe cap	steel, wide anatomical shape provides more toe room and optimum fit
sole	RAPTOR PU.2D with responsive cushioning for high energy return
size	35 - 48
standard	EN ISO 20345:2011 S1 SRC, ESD in accordance with EN IEC 61340-4-3:2018

safety sandals

ARMEN 9007 6660 S1 ESD

work sandals **METAL FREE**

ARMEN 9007 6660 O1 FO ESD



ARELAX™
SHOE CONSTRUCTION

ART 702 Air 1010 SB A E FO ESD

upper	hydrophobic microfiber MICRO PRO 2,2 mm increases resistance and breathability
lining	CLIMAX with 3D construction for unlimited air circulation and climate optimisation
insole	EFFECTOR memory polyurethane foam for added air rebound and breathability
toe cap	steel, wide anatomical shape provides more toe room and optimum fit
sole	RAPTOR PU.2D with responsive cushioning for high energy return
size	35 - 48
standard	EN ISO 20345:2011 SB A E FO SRC, ESD in accordance with EN IEC 61340-4-3:2018

safety sandals

ART 702 Air 1010 SB A E FO ESD

work sandals

ART 702 Air 1010 OB A E FO ESD

ARTRA SAFETY



ARELAX™
SHOE CONSTRUCTION

ARMEN 9007 1010 S1 ESD

upper	hydrophobic microfiber MICRO PRO 2,2 mm increases resistance and breathability
lining	TOTAL DRY for exceptional level of absorption and breathability
insole	EFFECTOR memory polyurethane foam for added air rebound and breathability
toe cap	steel, wide anatomical shape provides more toe room and optimum fit
sole	RAPTOR PU.2D with responsive cushioning for high energy return
size	35 - 48
standard	EN ISO 20345:2011 S1 SRC, ESD in accordance with EN IEC 61340-4-3:2018

safety sandals

ARMEN 9007 1010 S1 ESD

work sandals **METAL FREE**

ARMEN 9007 1010 O1 FO ESD



ARELAX™
SHOE CONSTRUCTION

ARICA 6207 Air 1010 S1 P ESD

upper	hydrophobic microfiber MICRO PRO 2,2 mm increases resistance and breathability
lining	CLIMAX with 3D construction for unlimited air circulation and climate optimisation
insole	EFFECTOR memory polyurethane foam for added air rebound and breathability
toe cap	steel, wide anatomical shape provides more toe room and optimum fit
midsole	ERGOFLEX metal-free, outstanding flexibility for natural movement
sole	RAPTOR PU.2D with responsive cushioning for high energy return
size	35 – 48
standard	EN ISO 20345:2011 S1 P SRC, ESD in accordance with EN IEC 61340-4-3:2018

safety half shoes

ARICA 6207 Air 1010 S1 P ESD

work half shoes **METAL FREE**

ARICA 6207 Air 1010 O1 FO ESD



ARTRA SAFETY



ARELAX™
SHOE CONSTRUCTION

ARJUN 903 2560 S1 ESD

upper	hydrophobic microfiber NUBUCK PRO 2,2 mm increases resistance and breathability / SHIELD PRO
lining	TOTAL DRY for exceptional level of absorption and breathability
insole	EFFECTOR memory polyurethane foam for added air rebound and breathability
toe cap	steel, wide anatomical shape provides more toe room and optimum fit
sole	GRIPPER PU.2D with robust design for increased resistance
size	35 – 48
standard	EN ISO 20345:2011 S1 SRC, ESD in accordance with EN IEC 61340-4-3:2018

safety sandals

ARJUN 903 2560 S1 ESD

